

Industry Stats

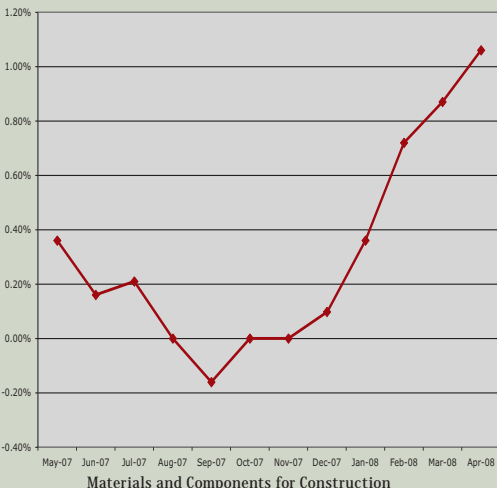
Monthly and annual statistics monitoring the growth and overall health of the construction industry, including employment numbers, employee hourly earnings, construction spending, selected construction commodities pricing and housing unit starts.

Producer Price Index for Selected Commodities

The Producer Price Index program of the U.S. Department of Labor measures the average change over time in the selling prices received by domestic producers for their output. These charts detail the month-to-month percentage change in selling prices for selected commodities related to the construction industry.

	May-07	Jun-07	Jul-07	Aug-07	Sep-07	Oct-07	Nov-07	Dec-07	Jan-08	Feb-08	Mar-08	Apr-08
Materials and Components for Construction	0.36%	0.16%	0.21%	0.00%	-0.16%	0.00%	0.00%	0.10%	0.36%	0.72%	0.87%	1.06%
Cement	-0.33%	-0.52%	0.29%	-0.24%	1.14%	-0.19%	-0.09%	-0.47%	1.14%	0.14%	-0.19%	-0.85%
Concrete Products	0.15%	0.10%	0.15%	0.10%	0.10%	-0.05%	0.44%	0.39%	0.05%	0.39%	0.29%	1.30%
Construction Sand, Gravel, Crushed Stone	0.09%	-0.35%	0.47%	1.11%	0.26%	0.77%	0.34%	-0.17%	1.22%	1.71%	1.23%	-0.36%
Gasoline	9.71%	-4.62%	5.60%	-14.21%	4.06%	-0.98%	15.67%	-8.90%	1.95%	1.54%	11.86%	3.23%
#2 Diesel Fuel	-4.83%	0.49%	6.99%	-5.05%	6.49%	1.38%	18.87%	-8.36%	3.16%	2.21%	23.96%	2.73%
Lumber	-0.79%	0.91%	1.13%	-1.34%	-1.47%	-1.73%	-2.34%	0.06%	-2.81%	-0.12%	-0.06%	0.31%
Iron and Steel	-1.63%	-0.24%	-0.49%	-1.86%	-0.35%	-0.90%	-0.10%	1.42%	4.24%	2.87%	3.67%	10.22%
Construction Machinery and Equipment	0.11%	0.22%	0.22%	0.00%	-0.06%	0.33%	0.11%	0.11%	0.39%	0.44%	0.38%	0.05%
Transportation Equipment	-0.06%	0.13%	0.00%	-0.13%	-0.32%	2.08%	0.25%	-0.45%	0.32%	0.25%	-0.19%	0.19%

Month-to-Month Percentage Price Change in Materials and Components Used in Construction



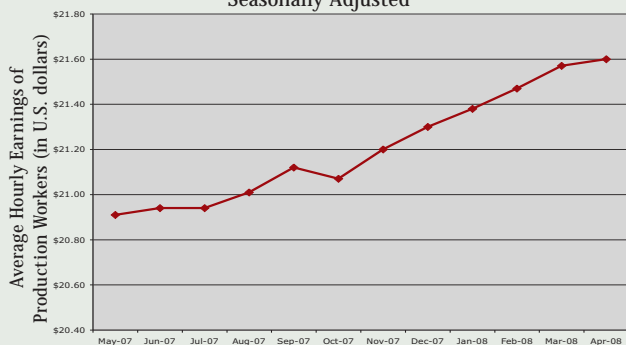
Note: January 2008 through April 2008 figures are preliminary.

Source: U.S. Department of Labor

Average Hourly Wages of Construction Workers

May 2007 - April 2008

(March - April 2008 figures preliminary)
Seasonally Adjusted

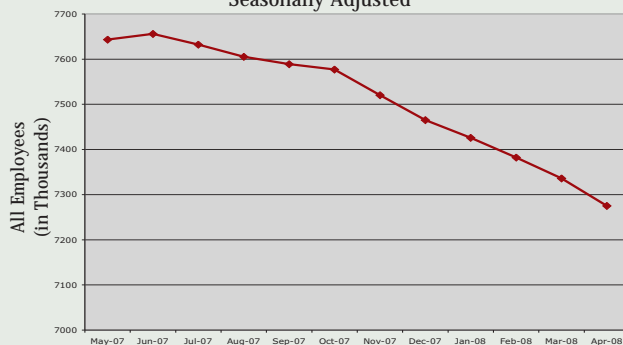


Source: U.S. Department of Labor

Employment in Construction

May 2007 - April 2008

(March - April 2008 figures preliminary)
Seasonally Adjusted



New Privately Owned Housing Units Authorized By Building Permits

Seasonally Adjusted Annual Rate
In Thousands of Units

February - April 2008 vs. April 2007

Survey Date	Total Units	1 unit	2-4 units	5+ units
Mar-07	1,489	1,078	61	350
Jan-08	981	646	40	295
Feb-08	932	621	36	274
Apr-08	982	649	38	295

Source: U.S. Census Bureau

Annual Value of Construction Put in Place 2006/2007/April 2008 Comparison

(Millions of dollars. Totals may not add up perfectly due to rounding.)

	2006	2007	Apr 2008*
Total Private Construction	896,774	842,358	823,798
Residential	582,290	462,007	435,790
Non-residential	314,484	380,351	388,009
Total Public Construction	280,885	297,842	297,087
State and local	261,772	277,437	276,795
Federal	19,112	20,405	20,292
TOTAL Construction	1,177,659	1,140,200	1,120,885

*Seasonally Adjusted Annual Rate

Source: U.S. Census Bureau